

**YAGGY COLBY ASSOCIATES**

ENGINEERS  
SURVEYORS • PLANNERS  
LANDSCAPE ARCHITECTS

215 NORTH ADAMS  
MASON CITY, IOWA 50401  
601-424-6344  
FAX 601-424-0331  
EMAIL INFO@YAGGY.COM

**BERGLAND + CRAM**  
architecture | planning | interiors

1002 East State Street  
Mason City, Iowa 50401  
T 1,641.423.6349  
F 1,641.423.7514  
a\_info@berglاندandcram.com  
www.berglاندandcram.com

MERCY MEDICAL CENTER NORTH IOWA  
**NORTH LOADING DOCK  
ADDITION + REMODEL**  
MASON CITY, IA

**PRELIMINARY**  
NOT FOR CONSTRUCTION

11/30/11

COPYRIGHT  
2011

DRAWN BY:  
YCA/S Meyer

REVISIONS:

PROJECT #  
**11070**

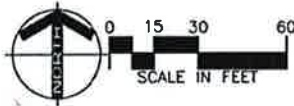
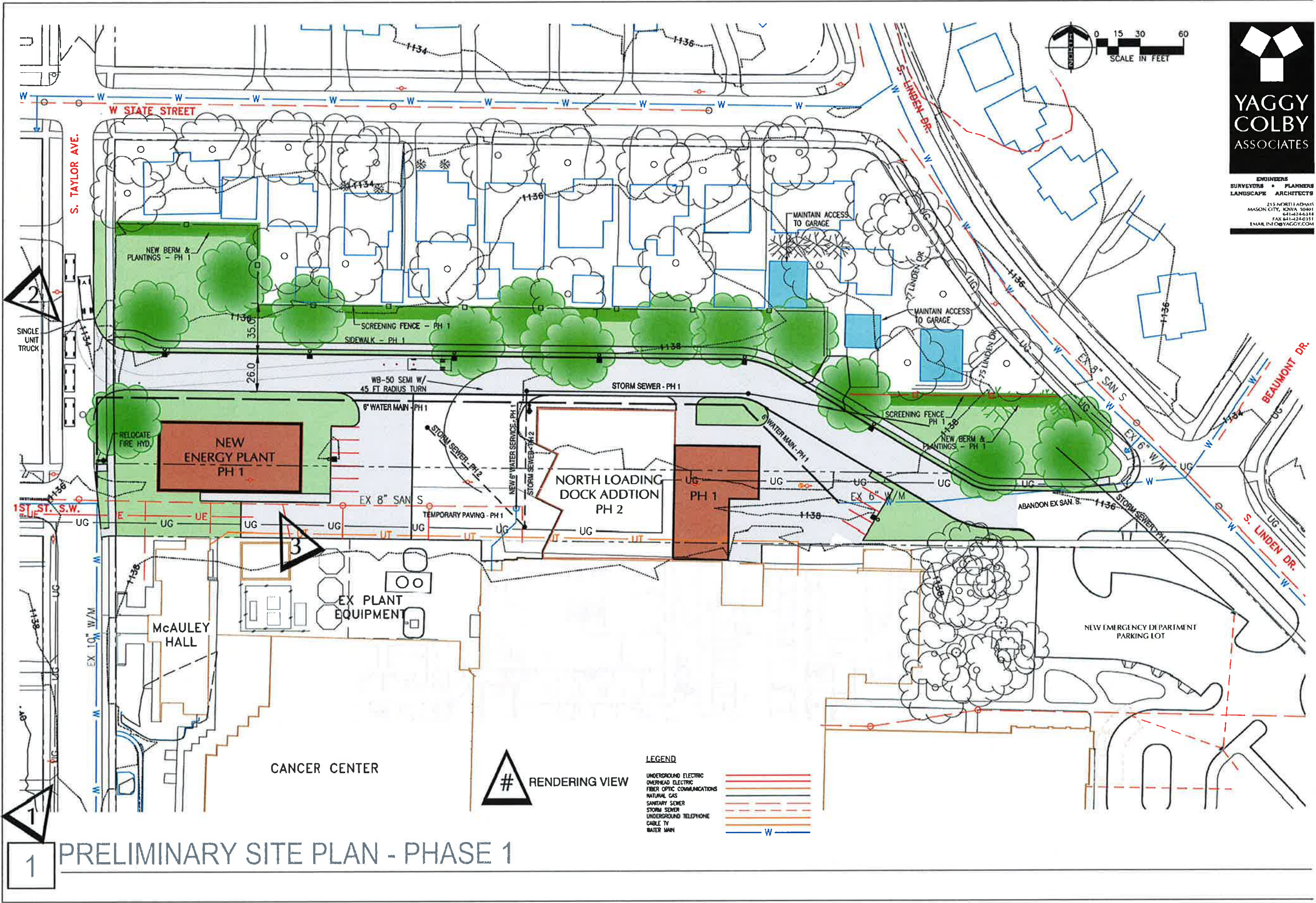
**P1**

**LEGEND**

- UNDERGROUND ELECTRIC
- OVERHEAD ELECTRIC
- FIBER OPTIC COMMUNICATIONS
- NATURAL GAS
- SANITARY SEWER
- STORM SEWER
- UNDERGROUND TELEPHONE
- CABLE TV
- WATER MAIN

REMOVE BUILDING

**1 EXISTING SITE PLAN**



**YAGGY COLBY ASSOCIATES**  
 ENGINEERS  
 SURVEYORS • PLANNERS  
 LANDSCAPE ARCHITECTS  
 215 NORTH LADAMS  
 MASON CITY, IOWA 50401  
 TEL: 564-2424  
 FAX: 564-2424  
 EMAIL: INFO@YAGGY.COM

**BERGLAND + GRAM**  
 Architecture | Planning | Interiors  
 1002 East State Street  
 Mason City, Iowa 50401  
 T: 564.423.6349  
 F: 564.423.7514  
 E: info@berglansandgram.com  
 www.berglansandgram.com

MERCY MEDICAL CENTER NORTH IOWA  
**NORTH LOADING DOCK  
 ADDITION + REMODEL PH 1**  
 MASON CITY, IA

**PRELIMINARY**  
 NOT FOR CONSTRUCTION

01/10/12

COPYRIGHT  
 2012  
 DRAWN BY:  
 YCAS Meyer  
 REVISIONS:

PROJECT #  
**11070**

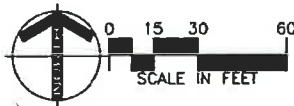
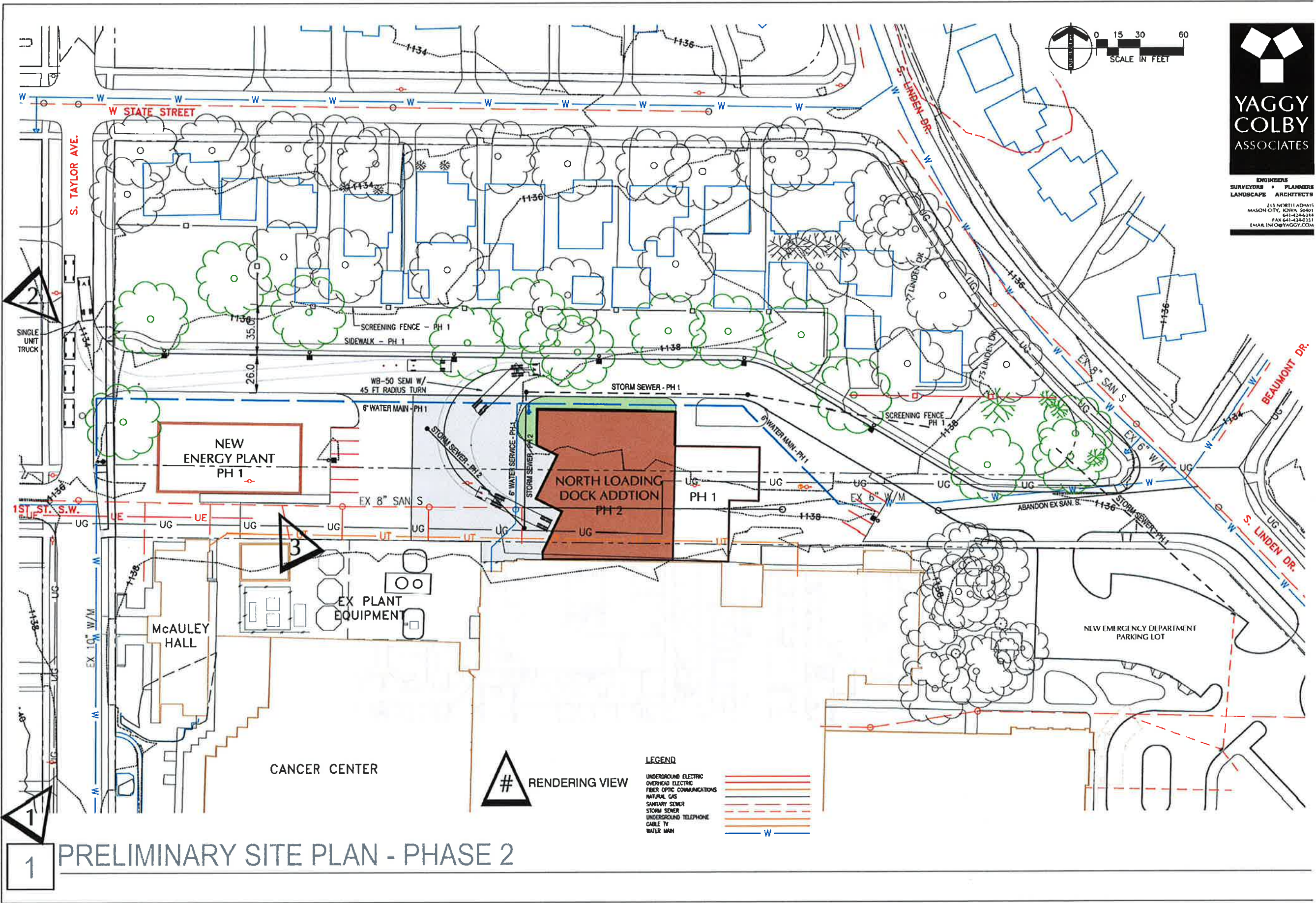
P2

**LEGEND**

- UNDERGROUND ELECTRIC
- OVERHEAD ELECTRIC
- FIBER OPTIC COMMUNICATIONS
- NATURAL GAS
- SANITARY SEWER
- STORM SEWER
- UNDERGROUND TELEPHONE
- CABLE TV
- WATER MAIN

# RENDERING VIEW

**1 PRELIMINARY SITE PLAN - PHASE 1**



**YAGGY COLBY ASSOCIATES**

ENGINEERS  
SURVEYORS • PLANNERS  
LANDSCAPE ARCHITECTS

213 NORTH ADAMS  
MASON CITY, IOWA 50401  
641-424-2444  
FAX 641-424-0331  
EMAIL INFO@YAGGY.COM

**BERGLAND + GRAM**  
Architecture | Planning | Interiors

1002 East State Street  
Mason City, Iowa 50401  
T 564.423.6049  
F 564.423.7514  
info@berglاندandgram.com  
www.berglاندandgram.com

MERCY MEDICAL CENTER NORTH IOWA  
**NORTH LOADING DOCK  
ADDITION + REMODEL PH 2**  
MASON CITY, IA

**PRELIMINARY**  
NOT FOR CONSTRUCTION

01/10/12

COPYRIGHT  
2012

DRAWN BY  
YCAS Meyer

REVISIONS:

PROJECT #  
11070

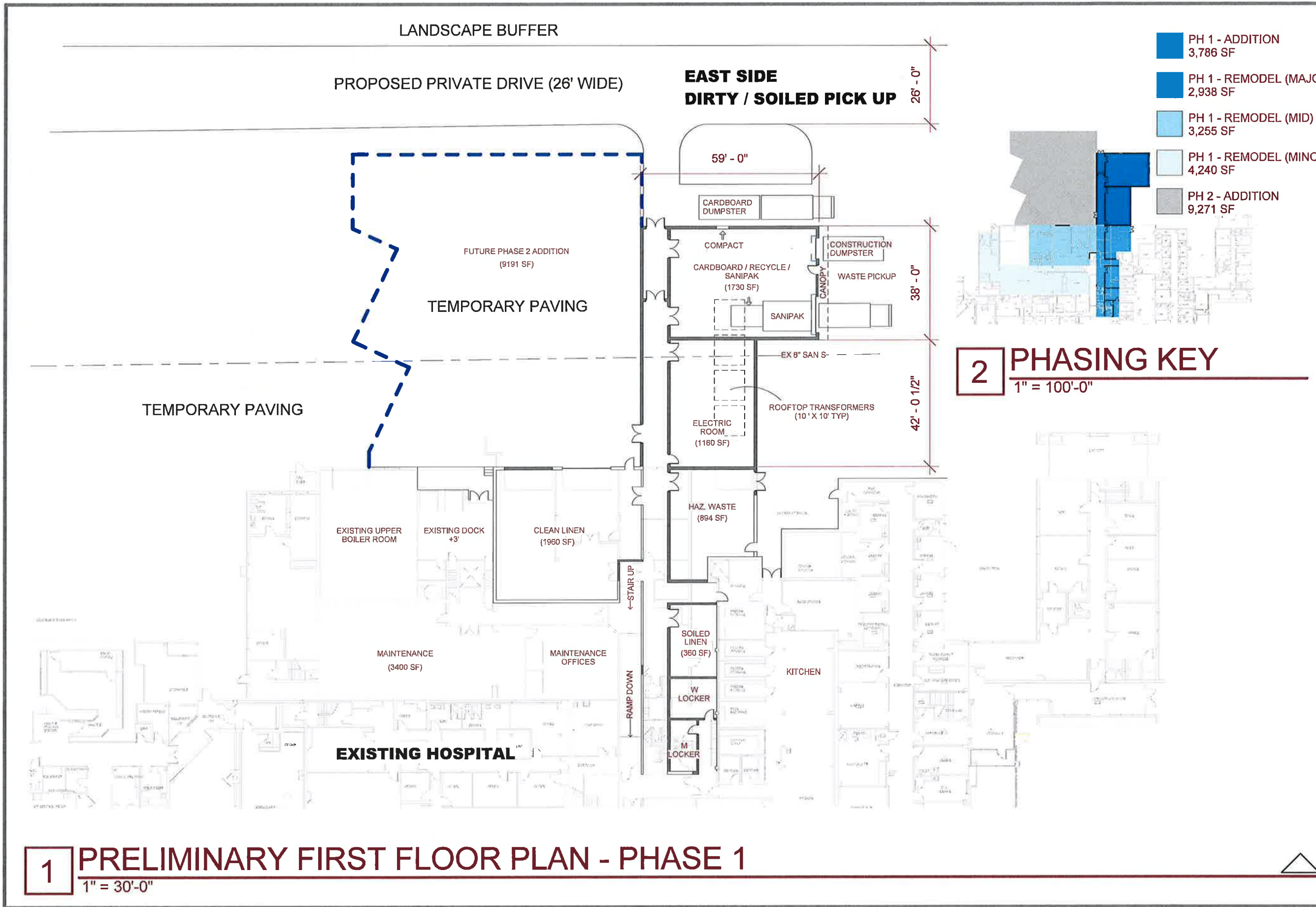
P3

**1 PRELIMINARY SITE PLAN - PHASE 2**

**LEGEND**

- UNDERGROUND ELECTRIC
- OVERHEAD ELECTRIC
- FIBER OPTIC COMMUNICATIONS
- NATURAL GAS
- SANITARY SEWER
- STORM SEWER
- UNDERGROUND TELEPHONE
- CABLE TV
- WATER MAIN

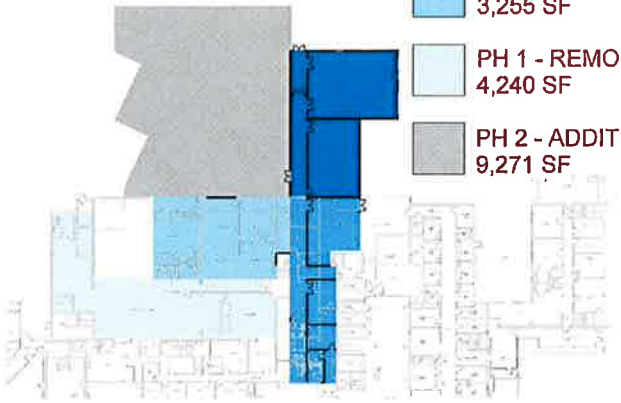
# RENDERING VIEW



**1** PRELIMINARY FIRST FLOOR PLAN - PHASE 1  
1" = 30'-0"

**2** PHASING KEY  
1" = 100'-0"

- PH 1 - ADDITION  
3,786 SF
- PH 1 - REMODEL (MAJOR)  
2,938 SF
- PH 1 - REMODEL (MID)  
3,255 SF
- PH 1 - REMODEL (MINOR)  
4,240 SF
- PH 2 - ADDITION  
9,271 SF



**BERGLAND + CRAM**  
architecture | planning | interiors  
1002 East State Street  
Mason City, Iowa 50401  
t. 1.641.423.6349  
f. 1.641.423.7514  
e. info@berglاندandcram.com  
www.berglاندandcram.com

MERCY MEDICAL CENTER NORTH IOWA  
**NORTH LOADING DOCK  
ADDITION + REMODEL**  
MASON CITY, IA

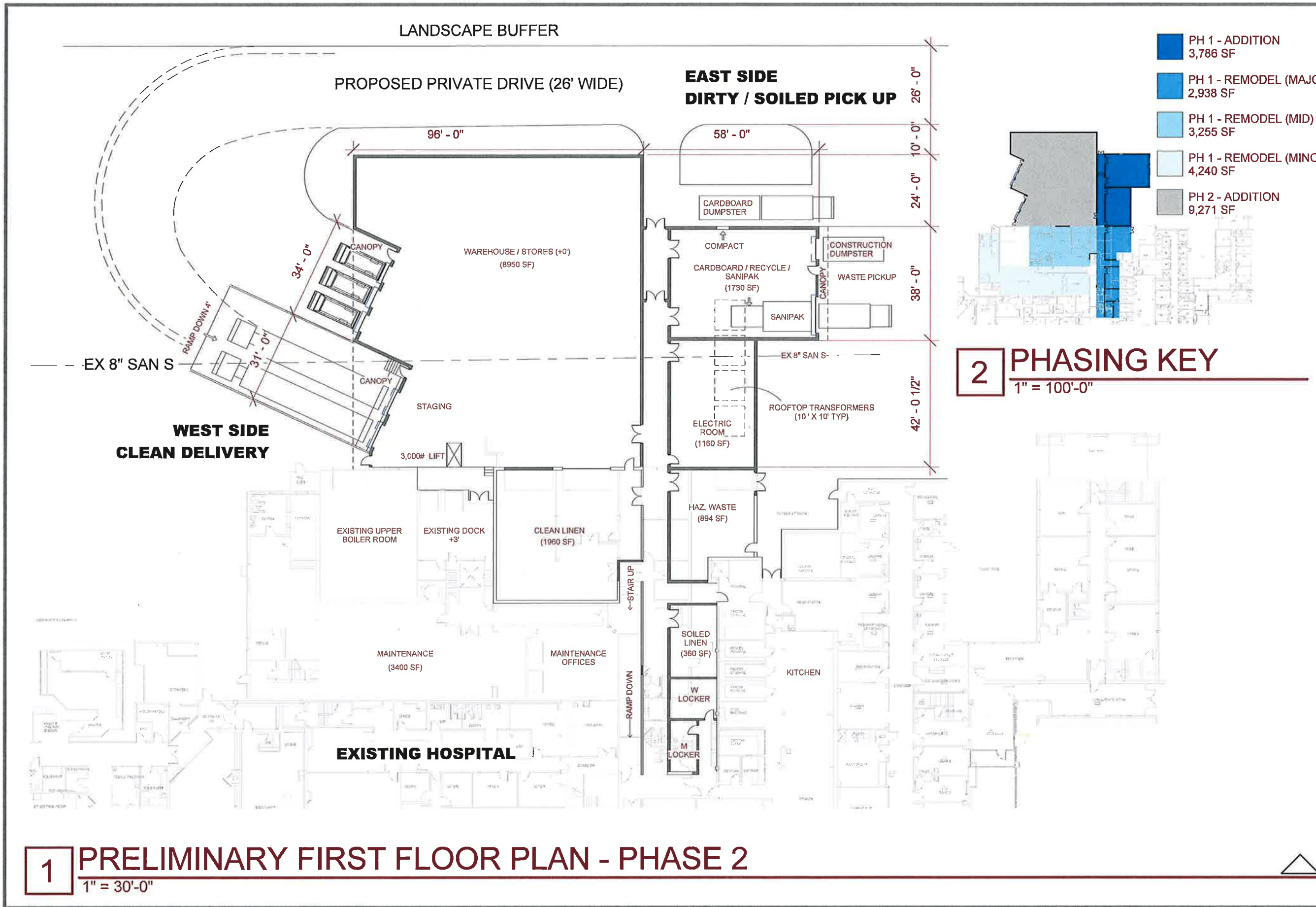
**PRELIMINARY**  
NOT FOR CONSTRUCTION

01/10/12

COPYRIGHT  
2010  
DRAWN BY:  
KSK  
REVISIONS:

PROJECT #  
**11071**

**P4**  
OF



- PH 1 - ADDITION  
3,786 SF
- PH 1 - REMODEL (MAJOR)  
2,938 SF
- PH 1 - REMODEL (MID)  
3,255 SF
- PH 1 - REMODEL (MINOR)  
4,240 SF
- PH 2 - ADDITION  
9,271 SF

**2 PHASING KEY**  
1" = 100'-0"

**BERGLAND + CRAM**  
architecture | planning | interiors  
1002 East State Street  
Mason City, Iowa 50401  
t. 1.641.423.6349  
f. 1.641.423.7514  
e. info@berglاندandcram.com  
www.berglاندandcram.com

MERCY MEDICAL CENTER NORTH IOWA  
**NORTH LOADING DOCK  
ADDITION + REMODEL**  
MASON CITY, IA

**PRELIMINARY**  
NOT FOR CONSTRUCTION

01/10/12

COPYRIGHT  
2010

DRAWN BY:  
KSK

REVISIONS:

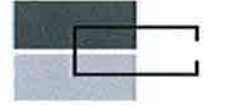
PROJECT #

11071

P5

OF

**1 PRELIMINARY FIRST FLOOR PLAN - PHASE 2**  
1" = 30'-0"



**BERGLAND + CRAM**  
 architecture | planning | interiors  
 1002 East State Street  
 Mason City, Iowa 50401  
 t. 1.641.423.6349  
 f. 1.641.423.7514  
 e. info@berglandandcram.com  
 www.berglandandcram.com

MERCY MEDICAL CENTER NORTH IOWA  
**A NEW ENERGY PLANT**

Mason City, Iowa

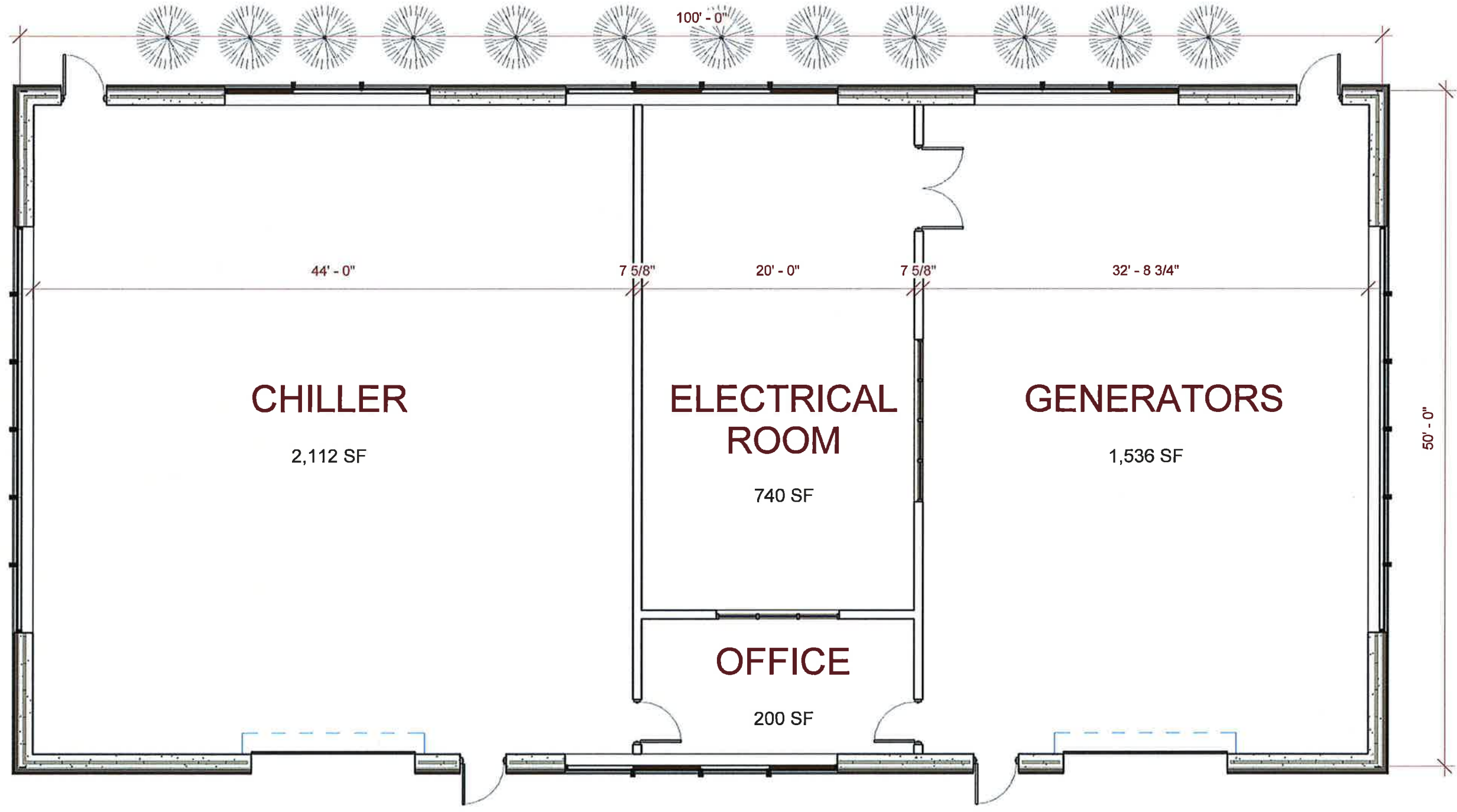
**PRELIMINARY**  
 NOT FOR CONSTRUCTION

01/10/12

COPYRIGHT  
2010  
 DRAWN BY:  
KSK/JB  
 REVISIONS:

PROJECT #  
**11070**

**P6**  
 OF



**1** PRELIMINARY FIRST FLOOR PLAN - PHASE 1  
 1/8" = 1'-0"

NEW ENERGY PLANT

EXISTING MCAULEY HALL



# RENDERING - VIEW FROM S TAYLOR AVE

NO SCALE

SEE PRELIMINARY SITE PLAN FOR VIEW LOCATION



# RENDERING - NW VIEW

NO SCALE

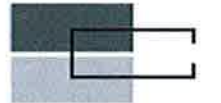
SEE PRELIMINARY SITE PLAN FOR VIEW LOCATION



# RENDERING - SE VIEW

NO SCALE

SEE PRELIMINARY SITE PLAN FOR VIEW LOCATION



**BERGLAND + CRAM**  
architecture | planning | interiors  
1002 East State Street  
Mason City, Iowa 50401  
t. 1.641.423.6349  
f. 1.641.423.7514  
e. info@berglandandcram.com  
www.berglandandcram.com

MERCY MEDICAL CENTER NORTH IOWA  
**A NEW ENERGY PLANT**

Mason City, Iowa

**PRELIMINARY**  
NOT FOR CONSTRUCTION

01/10/12

COPYRIGHT  
2010

DRAWN BY:  
KSK/JB  
REVISIONS:

PROJECT #

11070

P7

OF